

CITY OF HIGHLAND SPECIAL MEETING OF THE COMMUNITY TRAILS COMMITTEE AGENDA

SPECIAL MEETING

September 11, 2025

6:00 p.m.

City Hall

Donahue Council Chambers

27215 Base Line

Highland, California

MEMBERS

Erwin Fogerson, Chair

Richard Bowman, Vice Chair

Luis Gardea, Member

Michael McMillan, Member

Brent Merideth, Member

STAFF

Lawrence A. Mainez, Community Development Director

Kim Stater, Assistant Community Development Director

Travis Trejo, Assistant Planner

Camille Duarte, Administrative Assistant III

MISSION STATEMENT

Highland is dedicated to the betterment of the individual, the family, the neighborhood and the community. The City Council and the staff of Highland are dedicated to providing the quality of public facilities and services that its citizens are willing to fund and will do so as efficiently as possible.

Visit the City's Website at: www.cityofhighland.org

CITY OF HIGHLAND • 27215 BASE LINE • HIGHLAND, CALIFORNIA 92346 • (909) 864-6861 ☎ • (909) 862-3180 📠

In compliance with the Americans with Disabilities Act (ADA), if you need special assistance, please contact the City Clerk's office at (909) 864-6861, ext. 226, at least 72 hours prior to the meeting for any requests for reasonable accommodation to include interpreters.

Pursuant to Government Code Section 54957.5, any disclosable public records related to an open session item on a special meeting agenda and distributed by the City of Highland to all or a majority of the Community Trails Committee, less than 72 hours prior to that meeting, are available for public inspection at Highland City Hall, 27215 Base Line, Highland, CA 92346, during normal business hours.

Submission of Public Comments: For those wishing to make public comments by email, please submit your comments by email to be read aloud at the meeting. Email comments must be submitted by 5:00 p.m. on September 11, 2025 to publiccomment@cityofhighland.org. If you are submitting a public comment pertaining to an item on the September 11, 2025 agenda, please identify the agenda item number in the subject line.

Members of the public will be permitted to make public comments in person.

**COMMUNITY TRAILS COMMITTEE
SPECIAL MEETING AGENDA
September 11, 2025 - 6:00 P.M.**

CALL TO ORDER

Pledge of Allegiance

COMMUNITY INPUT (ITEMS NOT ON THE AGENDA)

To address the Community Trails Committee please complete a speaker form located at the entrance and give it to the Administrative Assistant prior to the beginning of the meeting. Your name will be called when it is your turn to speak. Individual speakers are limited to three minutes each. Comments received via email by September 11, 2025, 5:00 p.m., will be read into the record, provided that the reading shall not exceed three (3) minutes.

CONSENT CALENDAR

1. Minutes from April 10, 2025 Special Meeting
RECOMMENDATION: That the Community Trails Committee approve the minutes as submitted.

BUSINESS ITEMS

- 2. Overview of the 2025 Community Trails Day
RECOMMENDATION: Staff recommends the Community Trails Committee (CTC) provide staff with feedback and input regarding participation in the Community Trails Day.

- 3. An update and request for input by City Staff regarding educational signage for the Natural Parkland Trail.
RECOMMENDATION: Staff recommends the Community Trails Committee (CTC) hears and gives comments on educational and directional signage for the Natural Parkland project.

ANNOUNCEMENTS

ADJOURN

I, Camille Duarte, Administrative Assistant III of the City of Highland, California, certify that I caused to be posted this agenda on or before the 9th of April 2025 by 5:30 p.m. on our website at www.cityofhighland.org and in the following designated areas:

Highland Branch Library
7863 Central Avenue

Fire Station No. 1
26974 Base Line

City Hall
27215 Base Line

Date: September 9, 2025



Camille Duarte, Administrative Assistant III



STAFF REPORT

TO THE COMMUNITY TRAILS COMMITTEE

DATE: September 11, 2025

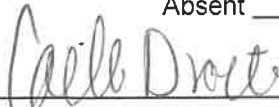

FROM: Lawrence Mainez, Community Development Director

PREPARED BY: Camille Duarte, Administrative Assistant III

SUBJECT: Minutes from the April 10, 2025 Community Trails Committee Special Meeting.

RECOMMENDATION: Staff recommends the Community Trails Committee approve the Minutes as submitted.

PUBLIC NOTICE: The agenda for this item was posted at the three locations per Resolution No. 2011-047 and on the City's website.

Approved _____	Motion _____	Second _____	Agenda Item No. <u> 1 </u>
Denied _____	Ayes _____		
Continued _____	Noes _____		File No. _____
Tabled _____	Abstain _____		
	Absent _____		
			
Recording Secretary		Community Development Director	

**COMMUNITY TRAILS COMMITTEE
SPECIAL MEETING MINUTES
April 10, 2025**

CALL TO ORDER

The regular meeting of the Community Trails Committee of the City of Highland was called to order at 6:00 p.m. by Vice Chair Bowman at the Donahue Council Chambers, 27215 Base Line, Highland, California.

Present:	Chair	Richard Bowman
	Member	Luis Gardea
	Member	Michael McMillan
	Member	Brent Merideth
	Member	Luis Gardea

Absent:	Vice Chair	Erwin Fogerson
---------	------------	----------------

Staff Present:	Lawrence Mainez, Community Development Director
	Travis Trejo, Assistant Planner
	Camille Duarte, Administrative Assistant

Pledge of Allegiance led by all members.

COMMUNITY INPUT (ITEMS NOT ON THE AGENDA)

None.

Luis Gardea introduced himself to the committee.

1. Election of Chair and Vice Chair

The Community Trails Committee elected Richard Bowman for Chair and Erwin Fogerson for Vice Chair. Motion carried 4-0, with Member Fogerson being absent.

CONSENT CALENDAR

2. Minutes from January 16, 2025 Special Meeting

A MOTION was made by Member Merideth, seconded by Member McMillan, to approve as amended. Motion carried, 4-0 with Member Fogerson being absent.

BUSINESS ITEMS

3. A verbal update by City Staff regarding the Natural Parkland Trail.

Assistant Planner Trejo presented the staff report.

Community Trails Committee filed and received Staff's presentation.

4. A verbal update by City Staff regarding the Highland/Redlands Regional Connector Project.

Assistant Planner Trejo presented the staff report.

Community Trails Committee heard and received Staff's presentation and was updated on the Highland/Redlands Regional Connector Project.

5. 29th Annual Community Trails Day

Assistant Planner Trejo presented the staff report.

A MOTION was made by Member Merideth, seconded by Member McMillan that selected June 5, 2025 Community Trails Day Event for City Council approval. Motion carried, 4-0, with Vice Chair Erwin being absent.

ANNOUNCEMENTS

Member Merideth asked to get an update on the City Creek to Alabama Street project and an update on the thermoplastic green paint that can be put onto the bike lanes through the Greenspot Road corridor.

ADJOURN

There being no further business, Member McMillan declared the meeting adjourned at 7:14 P.M.

Submitted by:

Approved by:

Camille Duarte,
Administrative Assistant III

Erwin Fogerson,
Community Trails Committee Chair



STAFF REPORT

TO THE COMMUNITY TRAILS COMMITTEE

DATE: September 11, 2025

FROM: Lawrence A. Mainez, Community Development Director

PREPARED BY: Travis Trejo, Assistant Planner *TT*

SUBJECT: Overview of the 2025 Community Trails Day

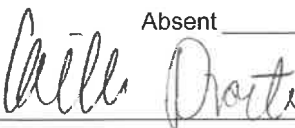

RECOMMENDATION: Staff recommends the Community Trails Committee (CTC) provide Staff with feedback and input regarding participation in the Community Trails Day.

PUBLIC NOTICE: As required by City Council Resolution, notice of the CTC's Meeting was posted at the City's three designated posting locations within the City. In addition, the Agenda was posted on the City's Website. No further Notice is required.

BACKGROUND: Staff is seeking feedback and input regarding this year's Community Trails Day. The input and feedback provided will be utilized in the planning of next year's Event.

Community Trails Day took place on June 7, 2025 on private property to help display the potential for future trails on the east side of Highland. Attendance this year saw about 70 people come out and participate. Budget for this year's Trails Day used \$261.08 spread between event refreshments, and advertising.

Staff is requesting feedback on this year's events to make note of what worked well this year or any improvements that may be needed for next year's event.

Approved _____	Motion _____	Second _____	Agenda Item No. <u>2</u>
Denied _____	Ayes _____		
Continued _____	Noes _____		File No. _____
Tabled _____	Abstain _____		
	Absent _____		
 _____ Recording Secretary		 _____ Lawrence A. Mainez, Community Development Director	



STAFF REPORT

TO THE COMMUNITY TRAILS COMMITTEE

DATE: September 11, 2025

FROM: Lawrence A. Mainez, Community Development Director

PREPARED BY: Travis Trejo, Assistant Planner ~~AK~~

SUBJECT: An update and request for input by City Staff regarding educational signage for the Natural Parkland Trail.

RECOMMENDATION: Staff recommends the Community Trails Committee hears and gives comments on educational and directional signage for the Natural Parkland Trail project.

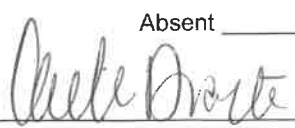

PUBLIC NOTICE: As required by City Council Resolution, notice of the CTC's Meeting was posted at the City's three designated posting locations within the City. In addition, the Agenda was posted on the City's Website. No further Notice is required.

UPDATES & DISCUSSIONS:

Construction began on the Natural Parkland Trail in July. Educational and Directional signage still needs to be finalized prior to installation.

It was determined while drafting the grant application that the project would involve the installation of new signs made of similar metal material as a typical street sign with anti-graffiti coating. The existing signs that are damaged will be overlaid with the street sign material with the same content and artwork (Exhibit A).

In total there are nineteen (19) educational signage locations and five (5) directional signs. Of the nineteen (19) educational signs, there are ten (10) existing graphics which will be reused. Four (4) of the remaining signs needed are located within the Historic Citrus Grove area of the trail located on the east side of the project. The remaining are scattered throughout. Some signs will utilize the existing graphics but will be in different locations than the original signage locations (Exhibit B).

Approved _____	Motion _____	Second _____	Agenda Item No. <u>3</u>
Denied _____	Ayes _____		
Continued _____	Noes _____		File No. _____
Tabled _____	Abstain _____		
	Absent _____		
			
Recording Secretary		Lawrence A. Mainez, Community Development Director	

Staff is seeking guidance and comments from the Community Trails Committee on the remaining signage for this project in order to work with our landscape architects to finalize the graphics for the project.

In addition to on-site signage, Staff is requesting guidance on potential locations of off-site signage directing the public towards the trail head.

EXHIBITS:

- A) Educational Signage Artwork
- B) Signage Legend

EXHIBIT A:

Educational Signage Artwork

WELCOME TO THE CITY OF HIGHLAND'S NATURAL PARKLAND AND TRAIL



The Natural Parkland and Trail is comprised of 87 acres of protected and natural open space. An easy 1.5 mile loop trail winds its way through sage scrub and chaparral, offering spectacular views along the way.

This land was donated to the City by the master developer of East Highlands Ranch, S-P East Highland-LLC.



City of Highland
www.ci.highland.ca.us



TRAILS THROUGH TIME

Welcome to the City of Highland's Natural Parkland and Trail

Winding through the foothills of the San Bernardino Mountains, this trail offers a window to the past. For at least 3,000 years Serrano and Cahuilla Indians crossed this land during hunting, gathering, and trading expeditions. The trail's plants and wildlife, and water from Plunge Creek helped sustain them on their journey.

Around 1858 settlers and farmers began setting down agricultural roots in the area. The parkland's trail was once an access road to their citrus groves. Plunge Creek and the Santa Ana River were their sources of irrigation water, channeled through rock-lined weir boxes and ditches that still stand today. As you walk the trail, think back 100 or 1,000 years. Whose footsteps will you be walking in?



The Natural Parkland and Trail is comprised of 67 acres of protected and natural open space. The trail is an easy 1.5 mile loop that winds through sage scrub and chaparral, offering spectacular views along the way.



PROTECTING OPEN SPACE

It takes all of us to care for this land

Highland lies at the foothills of the San Bernardino Mountains and stretches across two watersheds. While its western urban edge borders the City of San Bernardino, its eastern edge features large tracts of open space, including the Natural Parkland and Trail. Even as development plans seek to transform certain areas, the City of Highland continues to champion natural landscapes. In fact, the General Plan requires that at least 20 percent of the City be designated as open space.

It takes vision to establish open space and it takes science and grit to protect it. Rare species and visitor activity alike need to be monitored. Runoff, erosion, and invasive species need to be managed. Habitats need to be restored and trails maintained.

To some degree we all share this responsibility. The steps we take on this land and the hands we lend for its care can all make a difference. What difference will you make today?



SUBTLE BEAUTY

In spring and fall coastal sage scrub surprises us with color

Coastal and alluvial fan sage scrub blankets the slopes of the Natural Parkland. Unlike the woody plants of the chaparral, sage scrub plants are soft and aromatic. After winter rains, green seeps into their grey palette. White sage, black sage, elderberry, monkeyflower, and other plants burst into color—purple, lavender, yellow, and red. Keep an eye out for the tall flower stalks of yucca. Its blossoms appear like creamy-white bells. Watch also for the delicate flowers of chia and other plants that grow low to the ground.

During the blistering summer months, color drains from the scrub. Some plants even shed their leaves to conserve water. Come fall, buckwheat and chia blush wine red as their seeds ripen. The palate shifts into autumn tones as plants wait for the winter rains.



Alluvial sage scrub is a rare variant of coastal sage scrub. It occurs on the flood plains that lie at the base of our local mountains. Plants that live here, like the slender-horned spiniflower and Santa Ana River woolly star, cope well with periodic flooding and erosion.



Coastal sage scrub is California's most threatened habitat and many species of plants and animals depend upon it. Some, like the coastal California gnatcatcher, rely on it exclusively.

STORIES ON THE LAND

The valley floor reveals Highland's history

Imagine the valley over 100 years ago. Young citrus trees dotted the valley floor and foothills. Rivers and creeks bisected the land, some as natural courses and others as channels and ditches. While the Santa Ana River remains a principal water course today, the Mill Creek *zanja* and North Fork Ditch were equally important in years past.

From this vantage point you can see the foothills and mountains that frame the valley below and various features that anchor its history. The valley floor is criss-crossed with more than irrigation ditches. Railroad tracks became a part of the landscape once the Santa Fe Railroad extended its line from San Bernardino east. While the ditches brought water to the fields, the rail line brought people to the inland valley. Called the Kite Shaped Track, the line made a scenic loop, stopping in various towns including Highland and Mentone. By the late 1880s some trains rolled in with tourists and others rolled out with crates loaded with citrus.

The valley landscape has changed dramatically over the years. Housing tracts and industrial parks stand where citrus once did. Still, protecting natural landscapes remains a priority for Highland. More than 20 percent of the City is designated as open space.

To the west, what was once Norton Air Force Base is now San Bernardino International Airport. The San Gabriel Mountains rise in the distance.



To the south the community of East Highland is in the foreground. Box Springs Mountains rise in the distance.



To the east Mill Creek flows from the San Bernardino Mountains. What water isn't diverted to the *zanja* eventually flows into the Santa Ana River and into spreading basins.



PROTECTING THE RARE

Many species call this Natural Parkland home

This is a special place where songbirds gather and small mammals graze. It is home to the loud and gregarious—like quail and coyote—and to the quiet and reclusive—like kangaroo rats. All of them need this land. It offers food and shelter, nesting space and a resting place for many species. Keeping this habitat healthy makes life easier on them, many of which depend on very particular conditions for their survival.

These plants and animals are important members of an intricate ecosystem. They help make the Natural Parkland a special place. As you walk along the trail today, be alert for other things as well. Be careful around stinging nettle whose green serrated leaves grow fuzzy with thousands of tiny glassy barbs. And if you hear a raspy buzzing sound, it could be a Southern Pacific rattlesnake. Give it distance and respect!



With cheek pouches, large hind feet, and a tail that helps it balance, the San Bernardino kangaroo rat is well adapted for foraging for seed in sandy washes. Without the region's alluvial fan sage scrub, we stand to lose this endangered mammal.



Without the coastal sage scrub of the Natural Parkland, coastal California gnatcatchers would no longer greet you with their cat-like mews. The gnatcatcher is a specialist, so when sage scrub habitat disappears, so does this rare bird.

OF WATER AND WEIR BOXES

Early ranchers channeled water as well as prosperity.

This trail guides you through the remnants of a historic irrigation system. Keep an eye out for concrete-and-river rock flumes and weir boxes along the way. Some date back before the 1930s. The weir boxes directed the flow of creek water into channels that irrigated citrus groves far afield.

Although this area may appear dry, Plunge Creek traverses the Parkland and has carved a substantial canyon in its path. In the mid-1800s, early ranchers and farmers irrigated their thirsty orchards by channeling water from it, as well as the Santa Ana River and City Creek. Flowing into ditches and smaller rock-lined channels, the water cultivated more than crops. It quenched the thirst of the small but swelling community called East Highland.



The Santa Ana river watershed begins in the San Bernardino Mountains where snowmelt seeps into creeks fed by storm runoff. Streamlets become creeks and creeks become the river which still provides us with water today. It travels westward before being retained by Seven Oaks Dam and, later, Prado Dam until release.

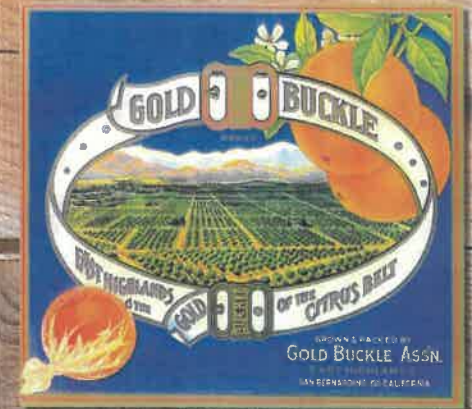
THE RISE OF CITRUS

Highland's orange trees and citrus industry thrived

Navel and Valencia citrus once grew behind the old stone wall you see. Their blossoms sweetened the scent of sage scrub and their fruit transformed East Highland Orange Company into a citrus-producing powerhouse. By the early 1900s the citrus industry cultivated a demand for planters, pruners, pickers, and packers. The groves inspired various projects, including a year-round irrigation system and new rail lines. Trains roared into the region to load packing crates. They roared out with fresh citrus for national and even international markets. By the early 1900s boxcars boasted all-new refrigeration. They were insulated, and ice bunkers sandwiched the orange crates at both ends. By the 1950s the East Highland Orange Company was shipping over a million boxes of oranges each year. This truly was the "gold buckle of the citrus belt."

But the buckle snapped in the 1960s. Leaves began withering and the trees fell victim to infection. Unknowingly, they had been budded on root stock that was susceptible to a viral infection. Old trees were pulled; new trees were planted. Some groves endured; others evolved as new communities sprang up.

Yet the spirit of East Highland Orange Company endures today. You can see it in the heritage groves, the irrigation channels, and even the soil under your feet. They all stand as a testament to Highland's citrus heritage.



In 1902, a pound of Highland's finest Gold Buckle brand oranges cost about four cents.



A RESTLESS LANDSCAPE

The San Andreas Fault has carved this land

Long before settlers and farmers began shaping Highland, geologic forces were at work folding and faulting this land. Like many communities in California, Highland sits on the San Andreas fault, the boundary between two gigantic “plates” of Earth’s crust. The Pacific Plate to the west slowly moves northwest past the North American Plate. Most days, we don’t detect the movement. Sometimes it hits us with a jolt.

The view before you is a reminder of Earth’s dynamic nature. The surface of the San Andreas fault may be subtle, but the results of its movement are blatant. Folded and thrust, the land rises sharply from the valley floor and creates the escarpment you see today.

The San Andreas fault stretches 810 miles through California. Its southern section begins near the Salton Sea, runs along the base of the San Bernardino and San Gabriel Mountains, and veers north past Frazier Park. The central segment begins at Parkfield; the northern section begins at Hollister.



From this vantage point you can also see the R on Keller Peak. Created in 1913, the massive letter is a significant symbol for the University of Redlands. Students still visit it today.

WITH NATURE IN MIND

For some residents, wilderness begins at the back door

Living close to nature results in remarkable experiences. Wildlife comes close for viewing and natural landscapes lend a different sense of beauty to a home. At the same time, getting close to nature can be a challenge. Wildlife sometimes arrives without an invitation and wildfire ignores neighborhood boundaries.

Fire is a naturally-occurring event in Southern California. For thousands of years it has played a role determining California's native landscape. Some plant communities have co-evolved with fire, benefitting from its intense heat to open seed coats and release nutrients into the soil.

But fire destroys before it renews. The fire scars you see from the 2003 Old Fire remind us of its fury.



Where neighborhoods meet natural areas is called the wildlands-urban interface. A complicated set of conditions here results in increased risk of wildfire.



Creating defensible space around structures and landscaping with fire in mind can save your home.

EXHIBIT B:
Signage Legend

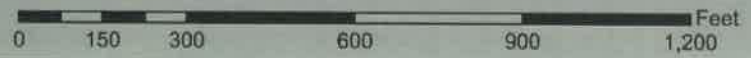
NATURAL PARKLAND TRAIL

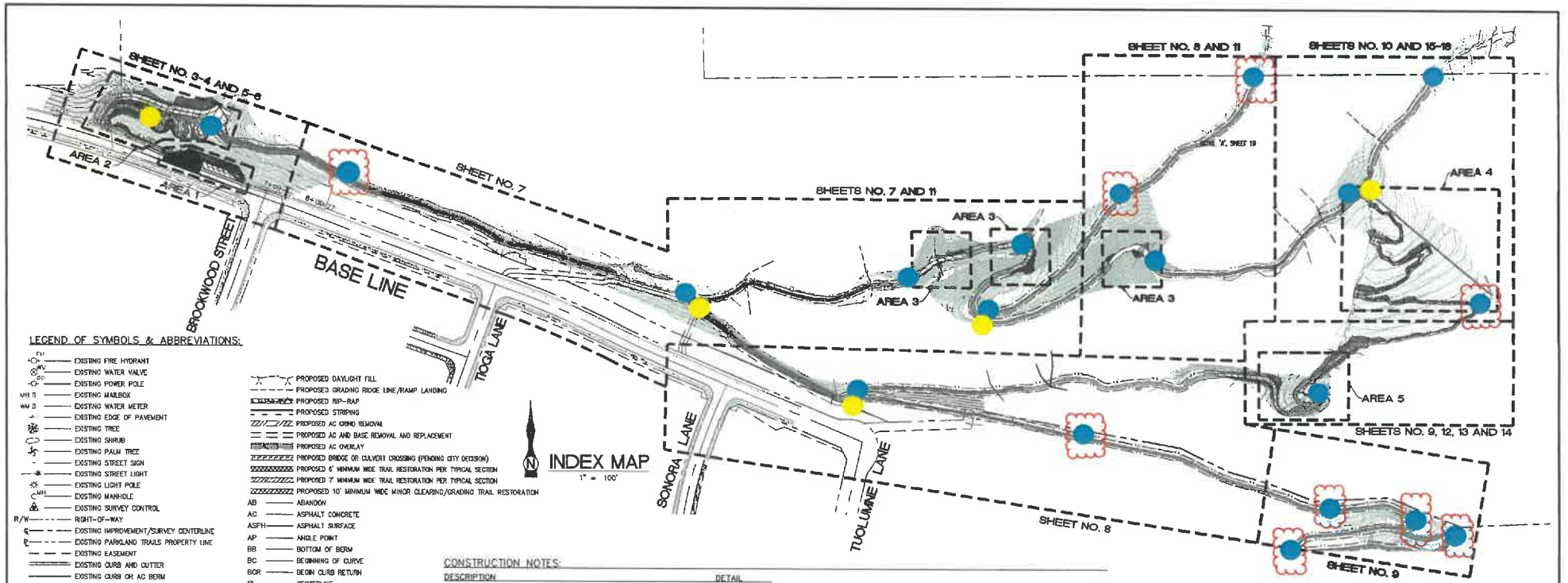
ORIGINAL LOCATIONS



Legend

- NATURAL PARKLAND TRAIL
- SIGN PANEL**
- KIOSK
- MONUMENT SIGN
- A - TRAIL THROUGH TIME
- B - THE FOOTPATHS OF ANCESTORS (NOT TO BE INSTALLED AT THIS TIME)
- C - PROTECTING OPEN SPACE
- D - SUBTLE BEAUTY
- E - STORIES ON THE LAND
- F - PROTECTING THE RARE
- G - OF WATER AND WEIR BOXES
- H - THE RISE OF CITRUS
- J - A RESTLESS LANDSCAPE
- I - WITH NATURE IN MIND





LEGEND OF SYMBOLS & ABBREVIATIONS:

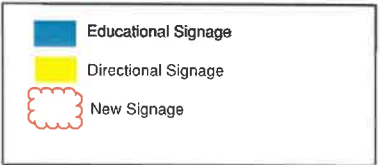
- | | |
|---|---|
| <ul style="list-style-type: none"> EX-1 EXISTING FIRE HYDRANT EX-2 EXISTING WATER VALVE EX-3 EXISTING POWER POLE EX-4 EXISTING MAILBOX EX-5 EXISTING WATER METER EX-6 EXISTING EDGE OF PAVEMENT EX-7 EXISTING TREE EX-8 EXISTING SHRUB EX-9 EXISTING PALM TREE EX-10 EXISTING STREET SIGN EX-11 EXISTING LIGHT POLE EX-12 EXISTING MANHOLE EX-13 EXISTING SURVEY CONTROL R/W RIGHT-OF-WAY CI EXISTING IMPROVEMENT/SURVEY CENTERLINE PT EXISTING PARKLAND TRAILS PROPERTY LINE EA EXISTING EASEMENT CC EXISTING CURB AND CUTTER CB EXISTING CURB OR AS BEAM CE EXISTING EDGE OF TRAIL CF EXISTING BLOCK/ROCK WALL CG EXISTING BRICK WALL CH EXISTING CHAIN LINK FENCE CI EXISTING GUIDE ROPE/PLASTIC FENCE CK EXISTING TOP/ICE OF SLOPE/BANK CL EXISTING SIDEWALK/DRIVEWAY CM EXISTING DRAINAGE CROSSING/PROPOSED CULVERT CN EXISTING DITCH/CONCRETE DITCH CO EXISTING ROCK DITCH CP EXISTING ROCK WALL CQ EXISTING RIP-RAP/BUILDERS CR EXISTING MAJOR CONTOUR CS EXISTING MINOR CONTOUR CT EXISTING STORM DRAIN LINE CU EXISTING STORM DRAIN STRUCTURE CV PROPOSED CONSTRUCTION LIMITS CW PROPOSED MAJOR CONTOUR CX PROPOSED MINOR CONTOUR CA PROPOSED CURB AND CUTTER CB PROPOSED AC REMOVAL/REPLACEMENT CC PROPOSED STORM DRAIN LINE CD PROPOSED WALL/ROCK WALL CE PROPOSED GUIDE ROPE CF PROPOSED TRAILS CENTERLINE CG PROPOSED SERVICE ROAD GRAVEL CLASS II BASE CH PROPOSED SERVICE ROAD CONCRETE CI PROPOSED CONCRETE SIDEWALK/WATER BAR CL PROPOSED DITCH CM PROPOSED STORM DRAIN STRUCTURE CN PROPOSED DAYLIGHT CUT | <ul style="list-style-type: none"> PROPOSED DAYLIGHT FILL PROPOSED GRADING RIDGE LINE/RAMP LANDING PROPOSED RIP-RAP PROPOSED STRIPING PROPOSED AC GRIND REMOVAL PROPOSED AC AND BASE REMOVAL AND REPLACEMENT PROPOSED AC OVERLAY PROPOSED BRIDGE OR CULVERT CROSSING (PENDING CITY DECISION) PROPOSED 4' MINIMUM WIDE TRAIL RESTORATION PER TYPICAL SECTION PROPOSED 7' MINIMUM WIDE TRAIL RESTORATION PER TYPICAL SECTION PROPOSED 10' MINIMUM WIDE MINOR CLEARING/GRADING TRAIL RESTORATION AB ABANDON AC ASPHALT CONCRETE ASPH ASPHALT SURFACE AP ANGLE POINT BB BOTTOM OF BERM BC BEGINNING OF CURVE BOR BEGIN CURB RETURN CL CENTERLINE CF CURB FACE DC DUNE FACE EF END OF CURVE EDR END CURB RETURN EL ELEVATION PEB PEDESTAL EX-1 EXISTING FIRE HYDRANT FL FLOW LINE FS FINISH SURFACE GB GRADE BREAK GS GROUND SURFACE INV INVERT LF LINEAR FEET LT LEFT ME MEDIAN MH MANHOLE NTS NOT TO SCALE POC PORTLAND CEMENT CONCRETE PR PROPOSED PRC POINT OF REVERSE CURVE RT RIGHT TB TOP OF BERM TC TOP OF CURB TD TOP OF DUNE WM WATER METER S SLOPE STA STATION TSB TRAFFIC SIGNAL BOX ELEC ELECTRICAL SCE SOUTHERN CALIFORNIA EDISON |
|---|---|



CONSTRUCTION NOTES:

- | DESCRIPTION | DETAIL |
|---|----------------------|
| 1. CONSTRUCT 18" WIDE CONCRETE FLATWORK WITH ADORIC TAN INTEGRAL COLOR-FINISH SCHEDULED MAINTENANCE, ROUND CORNER FINISH. | DETAIL 'A', SHEET 10 |
| 2. CONSTRUCT 18" WIDE SERVICE ROAD, 4' WIDE V-DITCH, AND TURNAROUND PER TYP. SECTION A-A WITH 6" MINIMUM DEPTH CLASS II BASE. | DETAIL 'Y', SHEET 5 |
| 3. CONSTRUCT WATER BAR AS SHOWN ON PLANS AND PER DETAIL F, SEE SHEET 5. | DETAIL 'Y', SHEET 5 |
| 4. CONSTRUCT DRY STACKED STONE RETAINING WALL, COLOR AND SIZE TO MATCH EXISTING HISTORIC WALLS ON SITE. | DETAIL 'Y', SHEET 10 |
| 5. CONSTRUCT NATURAL DRY STACKED STONE STEPS, COLOR AND SIZE TO MATCH EXISTING HISTORIC WALLS ON SITE. HEADS SHOULD BE NO LESS THAN 12", HEIGHT NO LESS THAN 4" AND NO MORE THAN 7" TALL. | DETAIL 'Y', SHEET 10 |
| 6. CONSTRUCT GRADED EARTHEN WALKWAY TRAIL, SOIL COMPACTED NATIVE SOIL, WALKWAY WITH AS SHOWN ON PLAN. | DETAIL 'Y', SHEET 10 |
| 7. REMOVE AND RELOCATE EXISTING SIGN PER CITY OF HIGHLAND STANDARD DING. NO. 2178. | DETAIL 'X', SHEET 10 |
| 8. CONSTRUCT ROPE GUIDELINE. | DETAIL 'X', SHEET 10 |
| 9. REMOVE AND RECONSTRUCT 18" SINGLE SHING VEHICULAR ACCESS GATE. | DETAIL 'Y', SHEET 10 |
| 10. CONSTRUCT 2" AC PAVEMENT OVERLAY. | DETAIL 'Y', SHEET 10 |
| 11. APPLY THERMOPLASTIC 12" SOLID WHITE STRIPE AS SHOWN. | DETAIL 'Y', SHEET 20 |
| 12. INSTALL TRAIL DIRECTIONAL SIGNAGE AS SHOWN ON PLANS. | DETAIL 'Y', SHEET 20 |
| 13. CONSTRUCT 3" WIDE EARTHEN DITCH AS SHOWN AND PER DITCH SECTION DETAIL ON SHEET 5. | DETAIL 'Y', SHEET 20 |
| 14. CONSTRUCT 36" WIDE CURB OUTLET STRUCTURE INLET TYPE 1 PER CITY OF HIGHLAND STANDARD DING. NO. 210A. | DETAIL 'Y', SHEET 20 |
| 15. CONSTRUCT 5' LONG LAUNDRY. | DETAIL 'Y', SHEET 20 |
| 16. APPLY HYDRO SEED TO RESTORE VEGETATION ON GRADED SLOPES. | DETAIL 'Y', SHEET 20 |
| 17. PROTECT IN PLACE, AS NOTED. | DETAIL 'Y', SHEET 20 |
| 18. REMOVE AND RELOCATE EXISTING BUILDERS AS NEEDED TO CONSTRUCT PROPOSED IMPROVEMENTS. | DETAIL 'Y', SHEET 20 |
| 19. CONSTRUCT 18" HDPE DRAINAGE CROSSING PER TYPICAL CULVERT CROSSING SECTION, HERE ON. | DETAIL 'Y', SHEET 20 |
| 20. INSTALL EDUCATIONAL SIGNAGE. | DETAIL 'X', SHEET 20 |
| 21. CONSTRUCT SITTING AND EDUCATIONAL AREA GRASS AS SHOWN AND COMPACT AT SOIL NATIVE SOIL. INSTALL FIXTURES AND SIGNAGE AS REQUIRED. | DETAIL 'X', SHEET 20 |

- | | |
|---|-----------------------|
| 22. CONSTRUCT RECTANGULAR LANDING SWITCHBACK AS SHOWN AND PER DETAIL ON SHEET 17. | DETAIL 'X', SHEET 20 |
| 23. CONSTRUCT GRADED EARTHEN WALKWAY TRAIL, SOIL COMPACTED NATIVE SOIL, WALKWAY WITH AS SHOWN ON PLAN, PER TRAIL RESTORATION TYPICAL SECTION, AND LEGEND, HEREON. | DETAIL 'Y', SHEET 10 |
| 24. CONSTRUCT A1-B2000 CURB PER SPRING STANDARD PLAN 120-3. | DETAIL 'Y', SHEET 10 |
| 25. CONSTRUCT CURB RAMP TYPE 1 PER SPRING STANDARD PLAN 111-5, AND AS SHOWN ON PLANS, INC. 4" SIDEWALK. | DETAIL 'Y', SHEET 10 |
| 26. CONSTRUCT VORHUZA RETAINING WALL, SEE SHEET 20 FOR DETAILS. | DETAIL 'Y', SHEET 10 |
| 27. SOIL PLAN (2" MIN) EXISTING AC PAVEMENT AS SHOWN AND PER CITY OF HIGHLAND CONSTRUCTION STANDARD NO. 215. CONSTRUCT AC PAVEMENT LEVELING COURSE AS NEEDED. | DETAIL 'Y', SHEET 10 |
| 28. SAWCUT AND REMOVE EXISTING AC PAVEMENT AND SUBGRADE AS NEEDED. CONSTRUCT 4" AC PAVEMENT OVER 6" AGGREGATE BASE. | DETAIL 'Y', SHEET 10 |
| 29. CONSTRUCT 4" THICK SIDEWALK PER SAN BERNARDINO COUNTY TRANSPORTATION DEPARTMENT PLAN 100, WIDTH PER PLAN. | DETAIL 'Y', SHEET 10 |
| 30. CONSTRUCT EDGEMOUNT ACCESSIBLE PARKING STALLS PER CALTRANS STANDARD PLAN ADA AND AS SHOWN ON PLANS, INCLUDING STRIPING, WHEEL STOPS AND SIGNAGE. | DETAIL 'Y', SHEET 10 |
| 31. APPLY THERMOPLASTIC DOUBLE YELLOW STRIPE PER CALTRANS STANDARD PLAN ADA, DETAIL 22. | DETAIL 'Y', SHEET 10 |
| 32. APPLY THERMOPLASTIC 6" WHITE BIKE LANE STRIPE PER CALTRANS STANDARD PLAN ADA, DETAIL 30. | DETAIL 'Y', SHEET 10 |
| 33. APPLY THERMOPLASTIC 6" WHITE INTERSECTION BIKE LANE STRIPE PER CALTRANS STANDARD PLAN ADA, DETAIL 30A. | DETAIL 'Y', SHEET 10 |
| 34. CONSTRUCT CURB PER SPRING STANDARD PLAN 120-3, A1(200) MODIFIED TO 05'-12". | DETAIL 'Y', SHEET 10 |
| 35. CONSTRUCT 36" HDPE CULVERT CROSSING, AS SHOWN ON PLANS. (SEE AREA 3, CROSSING 'B' AND AREA 5, CROSSING 'D' PLANS). | DETAIL 'Y', SHEET 10 |
| 36. CONSTRUCT STABILIZED FISH SURFACE WITH PRE-BLENDED ORGANIC BINDER "ORGANIC-LOCK" BY GAL MATERIALS, AS SHOWN ON PLANS AND PER SPECIFICATIONS. | DETAIL 'Y', SHEET 10 |
| 37. REMOVE, SAWCUT AND REINSTALL EDUCATIONAL SIGN AS SHOWN ON PLANS. | DETAIL 'X', SHEET 20. |
| 38. CONSTRUCT BACKED ROCK WATER BARS AS SHOWN ON PLANS AND PER CALIFORNIA STATE PARKS TRAILS HANDBOOK, FIG. 14.33. | DETAIL 'Y', SHEET 10. |



<p>CALL BEFORE YOU DIG</p> <p>1-800-487-8888</p> <p>811</p> <p>FOR PUBLIC SERVICE BY UNDERGROUND SERVICE ALERT</p>	<p>BENCHMARK</p> <p>BM No. 12 15 ELEVATION= 1546.84 ADJUSTED (1545.02)</p> <p>DESCRIPTION: NATIONAL GEODETIC SURVEY (NGS) 1988 MONUMENT DESCRIBED BY METRO WATER DISTRICT SOUTHERN CALIFORNIA 1985 EAST MEASUREMENT 7.5 METERS EAST SOUTHERN CROSSPOINT ROAD FROM CHANGING STRIPES 80 FEET SOUTH OF CROSSPOINT ROAD ON TOP OF A PRE-SOUNDING OF A SMALL WALSH 1.44 FEET EAST AND 44 FEET SOUTH OF THE SOUTH END WALL, W TOP OF A CONCRETE POST FLUSH</p>	<p>REAL</p> <p>REGISTERED PROFESSIONAL ENGINEER</p> <p>No. 88884</p> <p>6-9-9-20-14</p> <p>STATE OF CALIFORNIA</p>	<p>PLANS PREPARED UNDER THE SUPERVISION OF:</p> <p>DATE: _____</p>	<p>PLANS PREPARED BY:</p> <p>TKE</p> <p>TERRY L. KENNEDY REG. NO. 16914</p> <p>TVC ENGINEERING, INC.</p> <p>2305 CHICAGO AVENUE</p> <p>RIVERSIDE, CA 92507</p> <p>(951) 486-0440</p> <p>(951) 486-0440 FAX</p> <p>09-01-23</p>	<p>REVISIONS</p> <table border="1"> <thead> <tr> <th>NO.</th> <th>DESCRIPTION</th> <th>APP.</th> <th>DATE</th> </tr> </thead> <tbody> <tr> <td> </td> <td> </td> <td> </td> <td> </td> </tr> </tbody> </table>	NO.	DESCRIPTION	APP.	DATE					<p>CITY OF HIGHLAND</p> <p>RECOMMENDED BY: _____</p> <p>APPROVED BY: _____</p> <p>DATE: _____</p>	<p>NATURAL PARKLAND TRAIL IMPROVEMENTS</p> <p>NOTES AND INDEX MAP</p> <p>DRAWING NO. _____</p> <p>SHEET 2 OF 21</p>
	NO.	DESCRIPTION	APP.	DATE											